



hybrid tea rose



'Iguazu®'

Pépinières et Roseraies Georges Delbard SAS

BOTANICAL NAME

Rosa (ROW-za)

COMMON NAME

Hybrid tea rose

DESCRIPTION

Hybrid tea roses have single blooms that range from 2 to 6 inches in diameter, when open. Petal count varies from about 20 to 60 petals, depending on cultivar, and bloom forms range from cup shaped to tulip shaped.

Stems are leafy and often thorny (few to many thorns) although some thornless varieties are available. Stem length most often ranges from 40 cm (16 inches) to 90 cm (36 inches) although longer stems are available.

FRAGRANCE

Scents vary from none to spicy, fruity and citrusy. Fragrance is often inversely proportionate to vase life: The stronger the

scent, the shorter the vase life, and vice versa. Today, most cut hybrid tea roses are bred for vase life.

COLORS

These roses are available in virtually every hue except true blue (which is in development) as well as bicolors.

VASE LIFE

Longevity varies greatly among cultivars, usually from four to 12 days, and is highly dependent on their growing environment; how they're shipped, handled and cared for; and their maturity at the time of purchase.

AVAILABILITY

Hybrid tea roses are available year-round.

vase-life extenders

IMMEDIATE ATTENTION Unpack and process roses immediately upon arrival to reduce water stress. If you absolutely cannot attend to them immediately, store the box(es) in a floral cooler at 33 F to 35 F for as short a time as possible. Water deprivation and room temperatures can result in greatly reduced vase life, severe *Botrytis* (a fungal disease) on petals, and flowers that either open too rapidly or fail to open at all.

CLEAN ENVIRONMENT Sterilize containers, cutting tools and work surfaces with a professional floral disinfectant and cleaner before processing roses. Bacteria can clog stem ends and inhibit water uptake.

FOLIAGE/THORN REMOVAL Remove all packaging materials and stem bindings as well as leaves and thorns that will fall below the water line in containers—but only those leaves because foliage is beneficial to the flowers and increases vase life. A minimum of four sets of leaves should remain on each stem. Gently remove foliage and thorn tips with a plastic stripper or a soft cloth, being careful not to puncture or strip away bark; this impedes water uptake and allows microorganisms to enter the flower's vascular system.

HYDRATION AND NUTRITION Recut the ends of the rose stems on an angle with a clean,

sharp blade, removing at least 1 inch of stem.* Immediately dip or place the stems into a hydrating solution, then into sterile containers with warm (100 F to 110 F) properly proportioned flower-food solution formulated specifically for roses.† (Roses are exceptionally thirsty flowers.)

* *You can cut stems in air if you place them into hydrating solution quickly after making the cuts, or you can cut stems underwater as long as you change the water frequently to keep it free of bacteria.*

† *When mixed and used properly, rose food nearly doubles the vase life of cut roses, reduces bent neck, maintains color, and prevents leaf and petal drop.*

REFRIGERATION Immediately after processing, place roses into a floral cooler at 33 F to 35 F, with 85 percent to 90 percent humidity, and allow them to hydrate for at least two hours before selling or designing with them.

Continue to store/display roses in a floral cooler to slow aging processes. Displaying roses at room temperature for just two days can reduce vase life at the consumer level by four or more days.

ETHYLENE SENSITIVITY Some varieties are sensitive to ethylene (premature petal drop and/or malformed blooms are the effects) while others are not; however, all roses

buying tips

- Purchase roses only from reputable growers and wholesalers who consistently deliver the highest quality flowers.
- Make sure the roses you purchase are treated at the grower with a hydration solution, especially if they are to be shipped dry, and at the grower or during shipping with an ethylene inhibitor.
- Get to know which rose varieties open best and last longest, and purchase only those varieties. All rose varieties do not perform the same; some simply last longer than others. Some varieties can stay in the bud stage and never open.
- Order/select roses by variety name, not color. Keep in mind, though, that roses of one variety can differ vastly in color, size and performance based on the region and environment in which they are grown.
- Purchase only roses that have firm, well-hydrated blooms and stems and healthy green foliage. Avoid bunches with soft flower heads, fully opened flowers, flower heads with mold or rot, damaged or diseased foliage, or limp stems.

should be treated with an antiethylene agent at the grower or during shipping, especially if they will spend any time in a mass-market distribution center.

CARE EXTRAS Change the rose-food solution and recut rose stems every other day. To maximize vase life of roses arranged in floral foam, thoroughly soak the foam in properly proportioned rose-food solution before placing the foam into a container.

CONSUMER ACTION Provide customers and recipients with instructions on how to care for their roses as well as enough packets of rose food to last the life of their flowers.

challenges

BENT NECK AND FAILURE TO OPEN Bent neck (the wilting of the stem immediately below the flower head) and failure of blooms to open are probably the most recognized problems associated with poor-quality roses. There are a number of causes:

- Lack of water flowing into the bloom because of bacteria-clogged stem ends, usually a result of failure to recut stems and/or failure to use hydration and/or rose-food solutions.
- The roses were harvested too early (too tight), and this portion of the stem is immature and does not allow for water to be transported all the way to the flower.
- Severe water or temperature stress after harvest and/or during transportation.
- Storing roses too long, especially at high temperatures.
- The variety; some cultivars are more susceptible to bent neck than others.
- Exposure to ethylene gas (see "Ethylene Sensitivity, Page 18).

Once bent neck occurs, roses can sometimes recover if stems are recut under water and the entire stems and blooms are float soaked or submerged in room-temperature water for 20 to 30 minutes.

BROWN BLOTCHES ON PETALS; FUZZY GRAY PATCHES ON STEMS OR LEAVES This is *Botrytis*, a fungal disease. To reduce chances of infection, maintain humidity levels in floral coolers below 94 percent, and keep foliage and blooms dry.

BROWN, DRY LEAVES Brown and dried leaves generally are a result of flowers being stored too long, possibly at warmer-than-optimum temperatures. This cannot be reversed; all you can do is remove damaged leaves to enhance the roses' appearance. Roses with brown or dried leaves probably will have shortened vase life.

roses:
the newest varieties on the market

The roses featured in this gallery are among the latest hybrids created by the world's leading rose breeders. Despite their newness, these varieties are already in "significant production" and should be readily available to delight your Valentine's Day customers.



'JEANNE MOREAU'[®]
Meicalan
Meilland International



'First Lady'[®]
Rosen Tantau



'Alabaster'[®]
Rosen Tantau



'Norma Jeane'[®]
W. Kordes' Söhne



'White OHara'[®]
Pépinières et Roseraies
Georges Delbard SAS



'Alba'[®]
NIRP International



'Esmee'[®]
De Ruiter Innovations, B.V.



'Vanilla Bean'[®]
International Rose Breeders



'Mondiale'[®]
W. Kordes' Söhne



'Lemon Tree'[®]
Jan Spek Rosen B.V.



'Mint'[®]
International Rose Breeders



'Crazy Pirate'[®]
Preesman Holland B.V.



Do you need a quick and easy reference for information about other cut flowers?

Designed to fit on your countertop, desk or design bench, *Flower Flip — A Guide to 50 Favorite Flowers* provides information on care, vase life, availability, pronunciation and more in a handy 5.5" x 6.5" flip-chart format.

FRFB1010 \$12.95

Order Online

To order, visit www.superfloralretailing.com and click on "Bookstore," or call (800) 355-8086 (to discuss quantity purchases and pricing, ask for Mary Lou Clark, ext. 12.)

Some information from:
 Botanica, by R.G. Turner Jr. and Ernie Wasson
 Chain of Life Network[®], www.chainoflife.org
 Cut Flowers, by C. Gelein
 Cut Flowers of the World
 by Johannes Maree and Ben-Erik van Wyk
 Hortus Third, by Liberty Hyde Bailey and Ethel Zoe Bailey
 New Pronouncing Dictionary of Plant Names
 by Florists' Publishing Company
 SAF Flower & Plant Care,
 by Terril A. Nell, Ph.D. and Michael S. Reid, Ph.D.
 Stearn's Dictionary of Plant Names for Gardeners
 by William T. Stearn



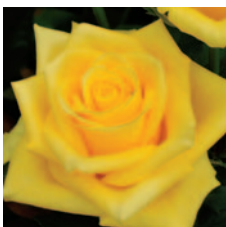
'Yokohama'[®]
Olij Breeding B.V.



'Royal Sphinx'[®]
Preesman Holland B.V.



'Bikini!'[®]
Schreurs B.V.



'Stardust'[®]
NIRP International



'Crème Brûlée'[®]
International Rose Breeders



'Alert'[®]
Jan Spek Rosen B.V.



'Intense'[®]
Jan Spek Rosen B.V.



'Pacarina'[®]
Esmeralda Breeding and Biotechnology



'Fascination'[®]
Bartels Roses B.V.



'Fidji'[®]
Jan Spek Rosen B.V.



'Fancy Curiosa'[®]
De Ruiter Innovations, B.V.



'Cuenca'[®]
Olij Breeding B.V.



'Alchemy'[®]
NIRP International



'Mother of Pearl'[®]
Jan Spek Rosen B.V.



'Lovely Hearts'[®]
Jan Spek Rosen B.V.



'Show Time Orange Cantata'[™]
Esmeralda Breeding and Biotechnology



'Confidens'[®]
Preesman Holland B.V.



'WANDA'[®] Meicurts
Meilland International



'Orange Crush'[®]
De Ruiter Innovations, B.V.



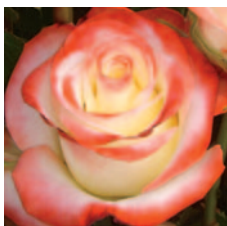
'High & Happy'[®]
Preesman Holland B.V.



'Oww'[®]
De Ruiter Innovations, B.V.



'Touch of Class'[®]
NIRP International



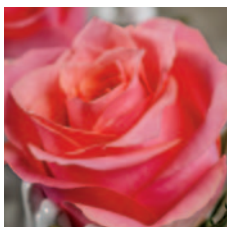
'Double Delight'[®]
NIRP International



'Glitz'[®]
De Ruiter Innovations, B.V.



'King Arthur'[®]
Jan Spek Rosen B.V.



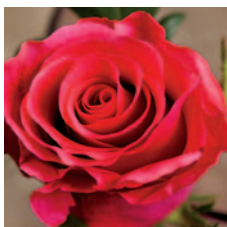
'Ace Pink+'[®]
Lex+, the Rose Factory B.V.



'Opus'[®]
Jan Spek Rosen B.V.



'Absurda'[®]
NIRP International



'Tacazzi+'[®]
Lex+, the Rose Factory B.V.



'Fana'[®]
De Ruiter Innovations, B.V.



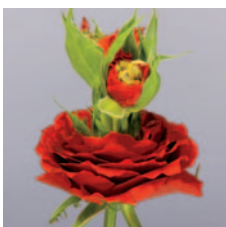
'Memory'[®]
W. Kordes' Söhne



'Black Pearl'[®]
NIRP International



'Rosamore'[®]
De Ruiter Innovations, B.V.



'EXCITING M'[®]
Meikerdobler
Meilland International



'High & Surprise'[®]
Preesman Holland B.V.



'Show Time Checkmate'[™]
Esmeralda Breeding and Biotechnology

cut flower of the month



'Hot Blood®'
Terra Nigra



'Myrna+'
Lex+, the Rose Factory B.V.



'Esmeralda®'
W. Kordes' Sohn



'Buzz'
Preesman Holland B.V.



'MATILDA®' Fetera
Meiland International



'Touchee®'
Bartels Roses B.V.



'Explorer®'
Interplant Roses B.V.



'Devotion®'
Interplant Roses B.V.



'SAMOURAI®'
Meikatana
Meiland International



'TOP SECRET®'
Meifflemingue
Meiland International



'Myrthe®'
Jan Spek Rosen B.V.



'All4Love+'
Lex+, the Rose Factory B.V.



'Pink Floyd!®'
Schreurs B.V.



'Thrill®'
De Ruiter Innovations, B.V.



'Hot Party®'
NIRP International



'Spirit®'
Franko Roses



'Plum Brûlée'
International Rose Breeders



'Pompidou'
Preesman Holland B.V.



'Deep Purple®'
Olij Breeding B.V.



'Hot Spot®'
Rosen Tantau



'Avatar®'
De Ruiter Innovations, B.V.



'Moody Blues!®'
Schreurs B.V.



'Dolcetto!®'
Schreurs B.V.



'Lipgloss®'
Terra Nigra



'Pink Party®'
NIRP International



'Charmant
Frelander®'
W. Kordes' Sohn



'PRINCE JARDNIER®'
Meitroni
Meiland International



'Show Time Clarita™'
Esmeralda Breeding and Biotechnology



'Glamgirl®'
De Ruiter Innovations, B.V.



'Show Time Groovy™'
Esmeralda Breeding and Biotechnology



'Fantasia Mondiale
Frelander®'
W. Kordes' Sohn



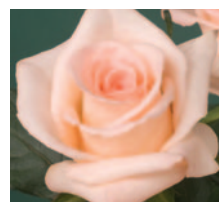
'Toff®'
De Ruiter Innovations, B.V.



'SWEET ELEGANCE®'
Meisubtyl
Meiland International



'Moyhe®'
De Ruiter Innovations, B.V.



'Gloria®'
Franko Roses



'Éclair'
International Rose Breeders sfr